



2024 ANNUAL REPORT



[Oak Crest Area Improvement Project]

2024 DISTRICT INFORMATION

OFFICE INFORMATION

The Roseau River Watershed District (RRWD) office is located at 714 6th Street SW, Roseau, MN 56751. The phone number is (218) 463-0313 and the e-mail address Tawni@roseauriverwd.com.

In 2024, the Board held regular business meetings on the first Thursday of each month at 8:00 a.m. (April – Dec.) and 12:00 p.m. (Jan. – March). All the meetings held by the Roseau River Watershed District are open to the public.

BOARD OF MANAGERS

A Board of Managers governs the Roseau River Watershed District. The Board has five managers; four of which are appointed by the Roseau County Board of Commissioners and one appointed by the Kittson County Board of Commissioners. The 2024 members were:

Chairman - Carter Diesen 40141 160 th St Wannaska, MN 56751	Vice-Chair - James Johnson 37232 240 th St Roseau, MN 56751
Secretary - LaVerne Voll 35572 520th Ave Salol, MN 56756	Treasurer - Jason Braaten 30957 340 th St Badger, MN 56751
Manager - Cody Schmalz 4529 400 th Street Lancaster, MN 56756	

EMPLOYEES AND CONSULTANTS

The district has three full-time employees: an Administrator, a Watershed Technician, and a Watershed Assistant. Citizens are encouraged to contact the staff or managers at any time with suggestions or concerns.

Administrator – Tracy Halstensgard

Watershed Technician - Blaine Broten

Watershed Assistant – Tawni Wensloff

Attorney – Michelle Moren, Roseau

Accounting Firm – Brady Martz, Thief River Falls, MN

ESTABLISHMENT

The Roseau River Drainage and Conservancy District, having been established by Order of the District Court, Roseau County, dated August 13, 1920, under the provisions of Chapter 13, Laws of 1919, Special Session. In 1963, the Governing Body of the Roseau River Drainage and Conservancy District petitioned the District Court, Roseau County as authorized in Minnesota Statutes, 112.74 for the right to operate and exercise all the rights and authority contained in Sections 112.34 - 112.83 of Minnesota Statutes. The Court, having heard the evidence adduced by the petitioners in favor of granting their petition, did order on June 17, 1963 that from and after this date the, the Roseau River Drainage and Conservancy District and its Governing Board shall operate under and exercise all the rights and authority contained in Section 112.34 - 112.83 of Minnesota Statutes, known as the "Minnesota Watershed Act", and shall hereafter be a Watershed District in accordance with the terms and provisions of the said "Minnesota Watershed Act", and the County Board of Commissioners of Roseau and Kittson Counties having petitioned the Minnesota Water Resource Board on November 20, 1963, asking for a change in boundary, for a change in name of said District to Roseau River Watershed District, and to designate a place of business for the Watershed District, pursuant to the provisions of Minnesota Laws of 1955, Chapter 799, as amended, and the Minnesota Water Resource Board having held a hearing on February 19, 1964 in Roseau did order on March 18, 1964, the change in name of the Roseau River Drainage and Conservancy District to the Roseau River Watershed District, the City of Roseau to be the place of business of the Roseau River Watershed District, and did define the District's boundary.

The board of managers initially adopted an Overall Plan for the RRWD on August 18, 1964, and was approved by the Minnesota Water Resource Board on April 20, 1965. In June 2004, the Board of Managers approved an update of the Overall Plan. An amendment to the plan was adopted in June of 2020. In 2021, the District entered into the 1 Watershed 1 Plan process with the Roseau County SWCD and Roseau County. This planning process was funded through a Board of Water & Soil Resources grant and is expected to be completed in 2023.

MISSION STATEMENT

It is the intention of the Board of Managers to manage the waters and related resources within the Roseau River Watershed District in a reasonable and orderly manner which will improve the general welfare and public health of the residents of the District.

The Board of Managers accepts the responsibilities with which they are charged as a governing body by Minnesota Statutes. Said Board of Managers, in the conduct of the duties and responsibilities conferred upon them, do not intend to usurp the authority or responsibilities of other agencies or governing bodies, however, said Board of Managers will not avoid their responsibilities and obligations.

It is the stated intent of the Managers herein that no person shall be deprived or divested of any previously established beneficial use or right, by any rules of the District, without due process of law. All rules of this district shall be construed according to this intention.

DISTRICT ACTIVITY

Website

The RRWD Board contracted with Dot.com Connections to create and maintain a district website. The website can be viewed at www.roseauriverwd.com. The District minutes, rules and permit forms are available online. The website is under continued development.

District Meetings

In 2024, the Board held 12 regular monthly meetings, 3 special meetings, and various other meetings.

Non-District Meetings

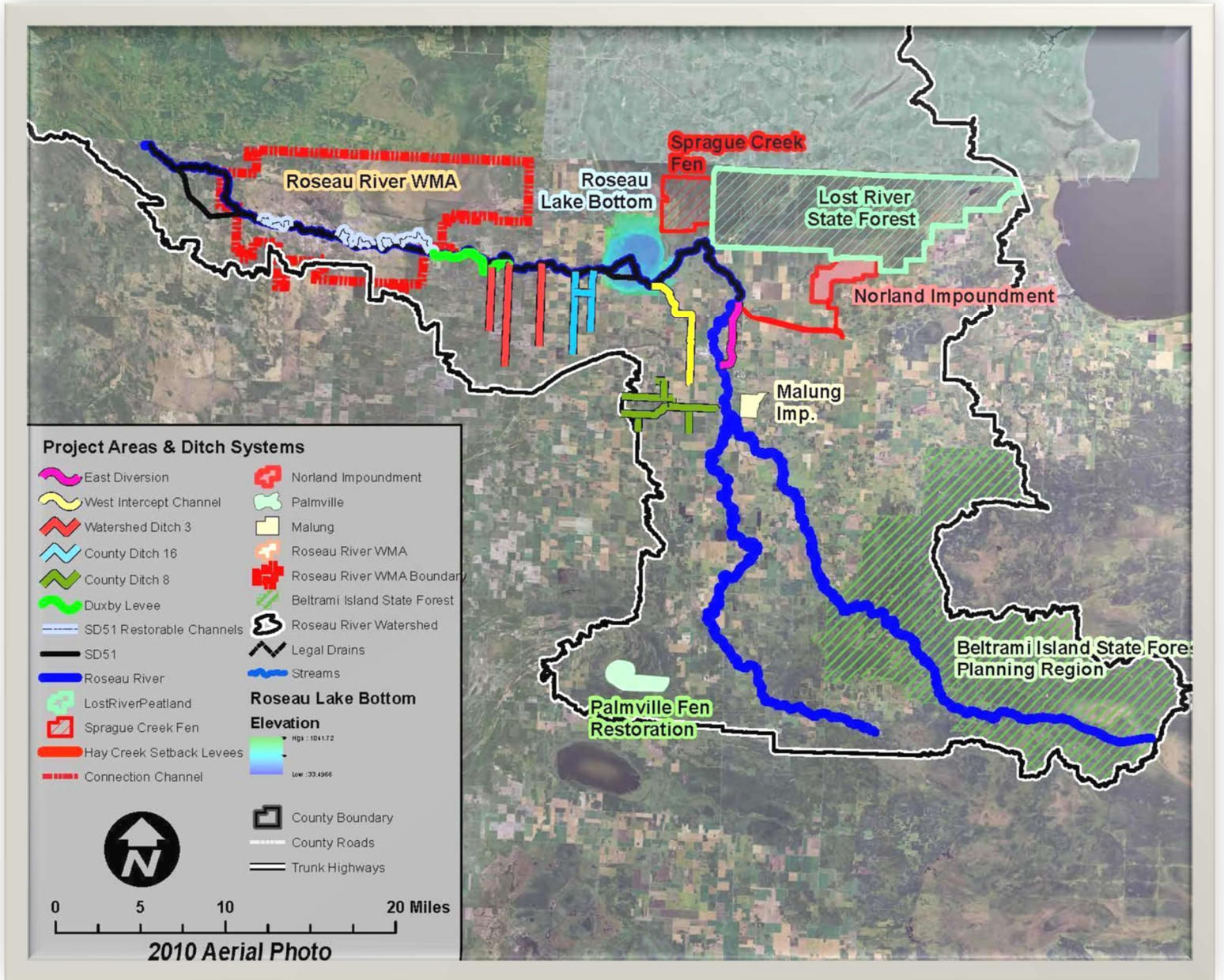
Minnesota Watersheds – In December 2024, Administrator Halstengard, Technician Broten, and Manager Johnson attended the annual meeting of the Minnesota Watersheds held in Alexandria, MN. The RRWD is a member of MN Watersheds which provides assistance on issues that affect watershed districts.

RRWMB - The Red River Watershed Management Board (RRWMB) delegate in 2024 was Manager Jason Braaten. Manager LaVerne Voll served as the alternate delegate. Manager Braaten attended regular monthly meetings as well as various RRWMB committee meetings. The District participated in the annual conference sponsored by the RRWMB.

RRIW - The Roseau River International Watershed (RRIW) was created in 2000 with representation from both the United States (Minnesota) and Canada (Manitoba). The group continues to meet to address water related issues and concerns within the Roseau River Basin. The two RRWD board members delegated to represent the RRWD in 2024 were Managers LaVerne Voll and Cody Schmalz. Manager Braaten serves as an alternate.

Citizens Advisory Committee (CAC) – The Citizens Advisory Committee is made up of RRWD residents who assist the board of managers on matters affecting the watershed district. For a list of committee members, please contact the office.

Existing Projects & Drainage Systems



DRAINAGE SYSTEMS

The Roseau River Watershed District is the Ditch Authority for the following systems:

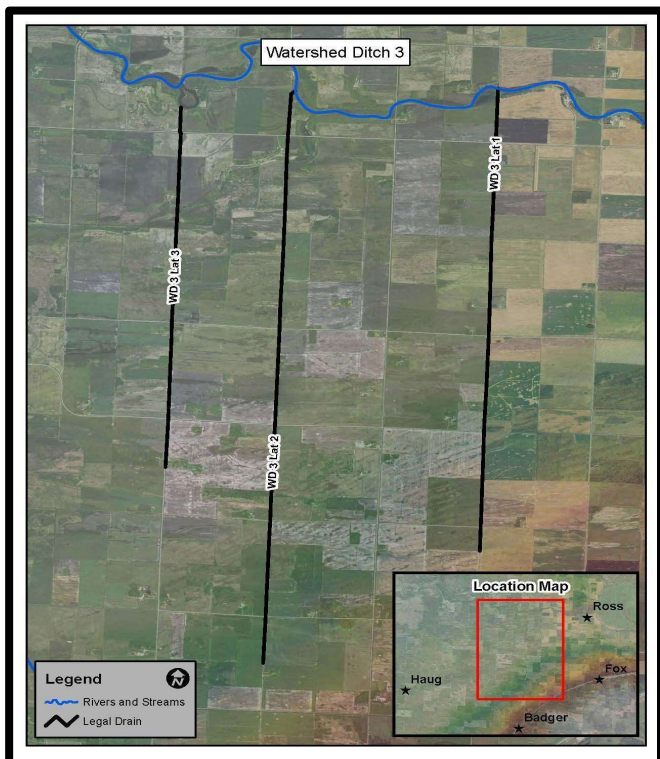
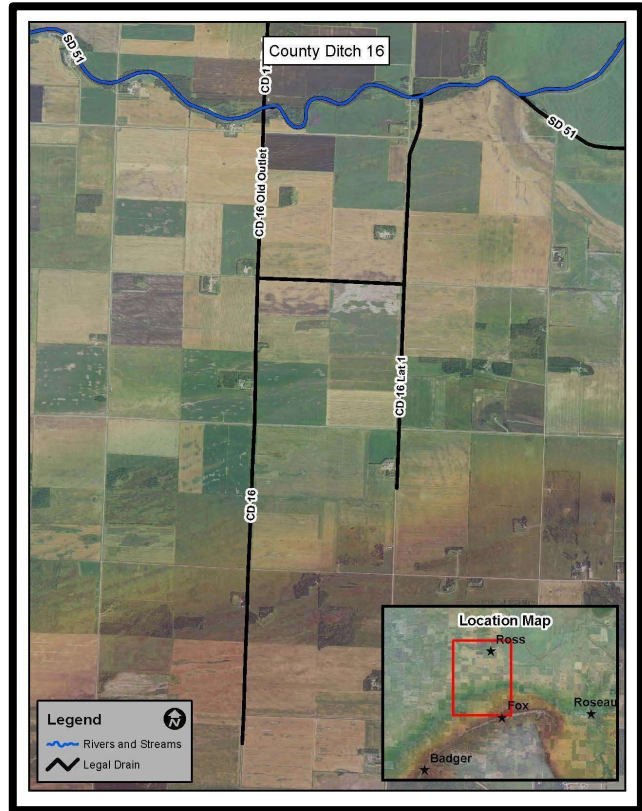
Roseau County Ditch No. 16

Roseau County Ditch 16 is located on the west side of Sections 34 and 27 in Dieter Township and drains lands in Dieter and Ross Townships.

CD No. 16 is in Dieter and Ross Townships and was turned over for administration and management to the Roseau River Watershed District.

In 2019 the District received an Improvement Petition for this system. Construction on the improvements was completed in October of 2022. In conjunction with the CD 16 Improvement Project, 27 sites were identified as contributing 84 tons of sediment annually into SD 51 in accordance with the PTMApp toolbar. Each of the sites constructed using Minnesota Clean Water Funds consisted of grade stabilization structures which prevents head cutting and sediment deposition into the river.

The final payment hearing was held in January 2023.



Watershed Ditch No. 3

This ditch system consists of three laterals that drain land in Ross, Moose, Dieter, and Pohlitz Townships.

In 2020 the district staff conducted a survey of all three laterals, collecting profile, cross section and culvert condition data. Information collected from the 2020 survey will inform future maintenance and/or repair. Standard inspection and maintenance were performed in 2023.

State Ditch No. 51

Originally established by the State of Minnesota it consisted of 10 river cutoffs constructed in the 1906-1907 time frame. From 1914 to 1918, the ditch was improved when the State of Minnesota dug the river channel from the Canadian border to and around the Roseau Lakebed. That expansion paralleled Cutoff Number 10 in Kittson County and followed the other cutoffs constructed in 1906 and 1907. In 1988, SD 51 was expanded when the Roseau County Board of Commissioners turned over the Roseau River and Roseau Lake Bottom portions of Judicial Ditch No. 61 and State Ditch No. 37 to the Roseau River Watershed District. Under Minnesota Statute Authority, these ditches were combined with State Ditch No. 51 at a hearing conducted on October 11, 1988, and continued and concluded on November 1, 1988. The redetermination of benefits process found more than 9 million dollars in ditch benefits.

Various stabilization projects have taken place in recent years funded by the State of Minnesota Clean Water Fund grants through the Minnesota Board of Water and Soil Resources. These projects have removed sediment from the channel and installed stabilization structures at locations where other ditch systems enter SD 51.

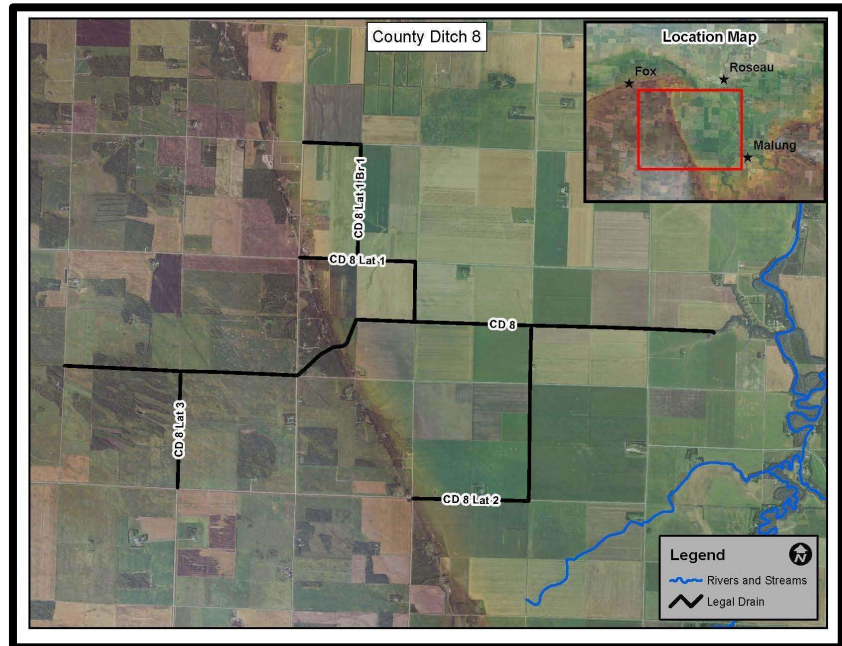
In 2023, the district also installed a weir in Cut-off #1 as part of the Roseau Lake Rehabilitation Project. The weir was installed to direct the majority of flows through the historic channel, restoring approximately 3.17 miles of river habitat.



As a water quality improvement, the District also installed three side-water inlets in Cut-off #1. Fifty percent of the funding for this project came from Watershed Based Implementation Funds (WBIF) with the remaining 50% being ditch funds.

Roseau County Ditch No. 8

This ditch, located in Jadis and Stafford Townships, was turned over for administration and management to the Watershed District. In 2020 district staff conducted a survey of the ditch profile, cross section and culvert condition. Information collected from the 2020 survey will inform future maintenance and/or repair.



In 2023, the District had repair work completed at the outlet of the ditch where a large sluff had occurred. The site was repaired with geotextile fabric and crushed rock rip rap to prevent future sluffing in that location. This repair work was funded by FEMA through a 2022 disaster declaration.



Watershed Ditch No. 115 (originally WD #4)

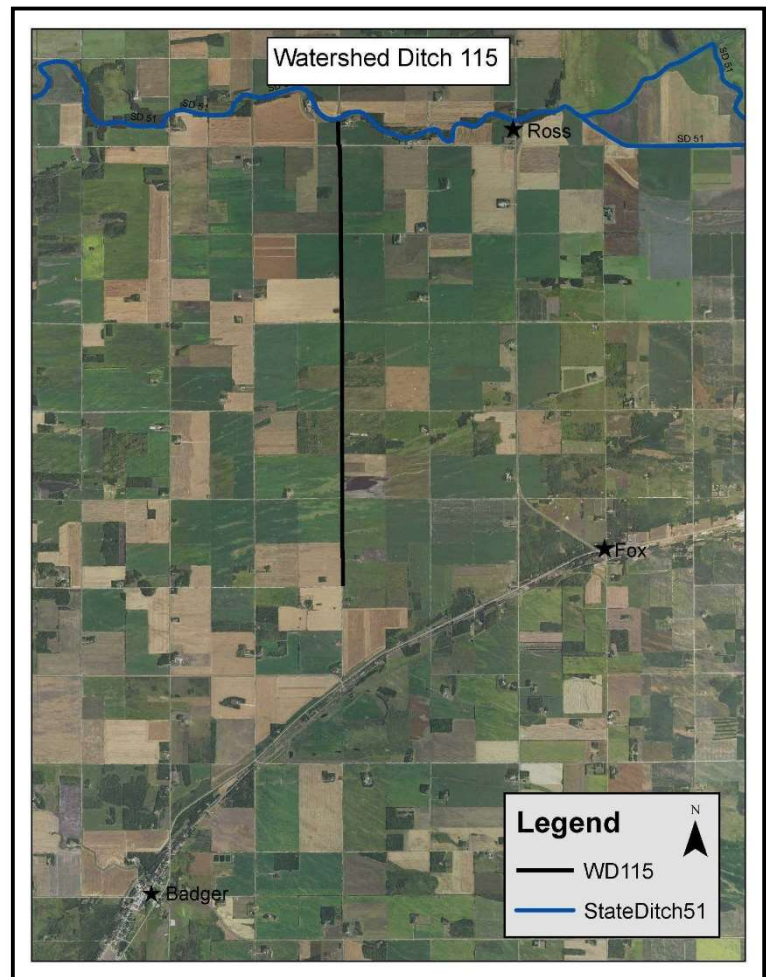


In 2020, a landowner submitted a 'Petition for Ditch' for the purpose of establishing a new drainage system in Ross and Dieter Townships along Roseau County Road 115. The approximate drainage area is 5.7 square miles. The petitioner proposed a 5.3 mile ditch in order to reduce the frequency of flooding events thereby reducing impacts to farmland and roadways.

As part of the water quality component of the new system, 29 surface water inlets (SWI) and one rock grade control structure were identified through the Prioritize Target Measure Application tool (PTMApp) as priority concerns in need of protection from chronic erosion in the WD 115 alignment. The PTMApp toolbar estimates the 29 SWI sites identified contribute 62 tons of sediment annually into the Roseau River. The rock grade control structure will be located at the confluence of WD 4 and the Roseau River. These water quality components were funded through the Minnesota Clean Water Fund.

A final public hearing was conducted on October 25, 2022, at the Roseau City Center in Roseau, MN. On December 7, 2022, the Roseau River Watershed District Board of Managers accepted the Findings and Order establishing Roseau River Watershed Ditch #115.

The District opened bids for the project on June 7th, 2023. Gladen Construction was awarded the bid and began working on the project in late June. Construction and seeding were completed in early September.



PROGRAMS

Permits

In 2024 there were a total of 34 permit applications for the following activities: installation of culverts for field drainage and driveway accesses, ditch slope repair, ag tiling and ag diking.

Roseau River Water Trail Plan

In 2017 the RRWD, along with community partners, initiated a planning process to map the Roseau River, improve accesses and amenities and seek designation as a State Water Trail. In late 2017 a Stakeholder Group was formed. The mission of the group is as follows: The Roseau River Water Trail promotes enjoyment and conservation of natural, cultural, and historical resources of the Roseau River by encouraging responsible, high quality public access opportunities through partnerships and stakeholder advocacy.

The goals were set as follows:

Short Term: 12 – 18 Months

- Establish a stakeholder group
- Secure planning funding
- Adopt charter or mission statement
- Identify potential launch sites, points of interest and hazards
- Develop project implementation phases
- Public outreach / civic engagement

Mid-term: 18 months – 3 years

- Map reaches of the river
- Secure implementation funding
- Implement project phases
- Public outreach / civic engagement
- Develop a sustainability plan

Long Term:

- Establishment of the Roseau River from the headwaters to the Canadian border as a mapped Water Trail.
- Establish the Roseau River as an international water trail

The following are objectives laid out by the Stakeholder Group:

- **Promote the Roseau River as a trail of regional significance in Northwest Minnesota:** Water trails connect individuals, families, and groups with a variety of hiking trails, bikeways, museums, historic sites, parks, and public lands. They cultivate a sense of place and love of community.
- **Promote the Roseau City Park and Hayes Lake SP as premier camping destinations in Northwest Minnesota:** Outdoor enthusiasts will appreciate all these campgrounds have to offer as they explore the water trail.
- **Stewardship:** Water trails utilize minimum-impact practices and cultivate stewards of the water, land, vegetation, wildlife, and other resources.
- **Education:** Serving as outdoor classrooms, water trails promote an awareness of the natural and cultural attributes of the area through experiences.
- **Conservation:** Water Trail activities support conservation of aquatic ecosystems and contiguous lands building a constituency of resource protection and restoration advocates.
- **Diversity:** Through shared work and play, water trails benefit community members from all walks of life promoting access to natural resources and educational opportunities thereby fostering tolerance and understanding.
- **Wellness and well-being:** Water trails provide wholesome, fresh-air activities promoting overall fitness and health of participants.

In 2018, a new boat dock and Kayak launch were installed at the Roseau City Park. The Stakeholder group also moved forward with drafting a Master Plan. Copies of the plan are available on our website or at the office. In 2021 the City Center Site was constructed and paid for by a grant from the Minnesota Department of Natural Resources Parks and Trails Legacy fund through the City of Roseau. In 2022 the RRWD partnered with the City of Roseau on a Northwest Minnesota Regional Parks and Trails application to continue to obtain funding for additional trail sites and continue to work through this process, being approved as a Regional Park & Trail in 2023.



Roseau River Comprehensive Watershed Management Plan

In 2013, the Local Government Water Roundtable suggested that local governments organize focused implementation plans based on watershed boundaries in order to align local water planning purposes and procedures creating a systematic, watershed-wide, science-based approach to watershed management. Under the State Statute, comprehensive watershed management plans need to be in effect by 2025.

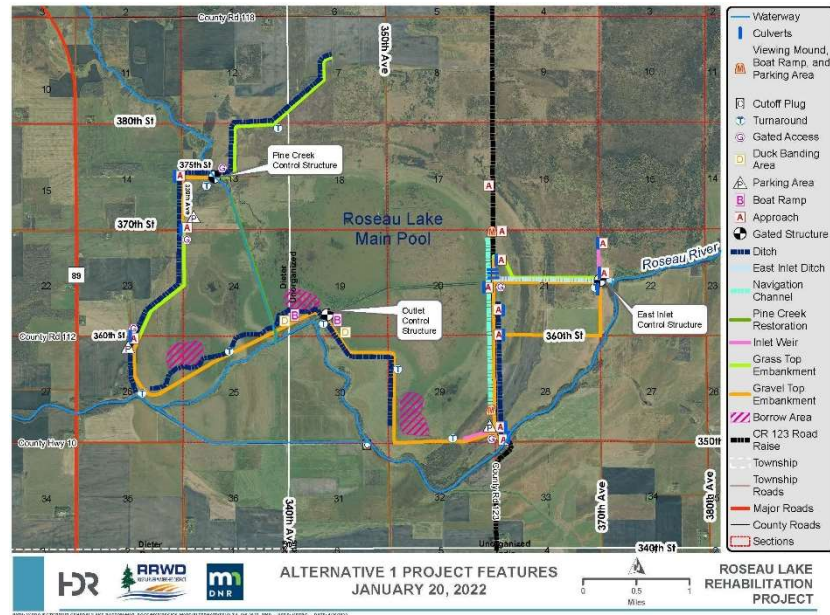
The Roseau River Comprehensive Watershed Management Plan was developed in 2022 through the Board of Water and Soil Resources (BWSR) One Watershed One Plan (1W1P) program. The Roseau River Watershed District partnered with Roseau County and the Roseau County Soil and Water Conservation District to develop a ten-year watershed management plan.

Issues affecting natural resources in the watershed were developed and prioritized through existing watershed reports, public input, and committee feedback. Goals and actions included in the plan were developed from priority issues and placed into a resource category: surface water, agricultural productivity, natural resources, or groundwater. Issues were further prioritized by planning regions in order to target funding and actions to where they are most needed. The Roseau River Comprehensive Watershed Management Plan (CWMP) was completed in early 2023 and submitted to BWSR for approval. The approved plan can be found at <https://www.roseauriver1w1p.org/theplan> . The CWMP activities and funding are overseen by the Roseau River Joint Powers Board consisting of members from the RRWD, Roseau County, and the Roseau SWCD. Information about this board is available at <https://www.roseauriver1w1p.org/>

PROJECTS

Roseau Lake Rehabilitation Project

The Roseau Lake Bottom has provided many years of flood control benefits to the area, but over the years it has become evident that having the ability to control the timing of when the Lake Bottom floods would be beneficial. The Lake Bottom currently floods with “early water”, which diminishes or eliminates the available flood storage when the flood peak of the Roseau River moves through the area. This is a multi-purpose project intended to provide the following benefits:



Flood Damage Reduction

- Provide more efficient flood storage.
- Provide flood damage reduction downstream by decreasing peak flows at Caribou.
- Manage storage and flow release in beneficial consideration of Red River peak flows.
- Provide flood damage reduction in agricultural areas upstream and south of the Big Swamp along the Roseau River in Moose, Soler, Dieter, and Pohlitz Townships.

Habitat Restoration

- Streamflow restoration
- Improve water level management on WMA lands to improve vegetation management.
- Enhance waterfowl, fish, and wildlife habitat.

Erosion Reduction:

- Reduction in riverbank erosion and bank sloughing on the Roseau River.

The status of the project at the end of 2023 is as follows:

Construction

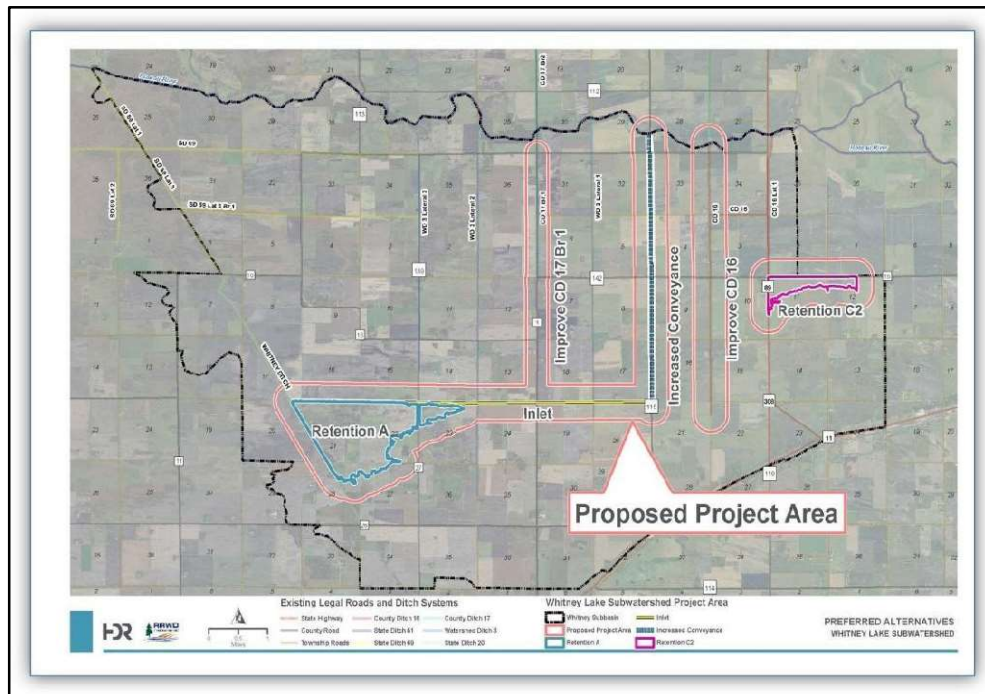
- Phase I construction bid was awarded in September 2023 with construction starting that same month.

Funding

- A grant application was submitted to the Lessard-Sams Outdoor Heritage Council for Phase II of the project. The application was forwarded for consideration to the 2024 Legislative Session for \$3.036 million.

Whitney Lake Watershed Management

Agricultural producers in the Whitney Lake sub watershed suffer frequent (every 1-2 years) inundation from minor events in both the spring and summer causing crop loss and/or damage. The Project Team has identified problem areas, defined strategic solutions, and provided planning guidance to implement construction of retention and drainage projects. The goal is to construct a multi-purpose water management project that will meet the purpose and needs identified, meet permitting requirements and be economically feasible. The Roseau River Watershed District is working to secure funding for the project. The District will utilize the Project Team process as identified in the *Red River Basin Flood Damage Reduction Work Group Agreement*.



Project Benefits:

Flood Damage Reduction

- Reduce agricultural and private land damages
- Reduce the risk of road damage

Flood Storage

- Utilize two retention sites to reduce peak flows
- Contribute to regional goal of reducing peak flows to the Red River

Erosion Reduction

- Improve the stability of water courses
- Reduce sediment and nutrient loading from upland sources
- Improve water quality
- Positive impact on wildlife and fish

The status of the project at the end of 2023 is as follows:

The District continues to develop the project with the focus being the adequacy of the outlet for Site A. Communications with landowners are ongoing.

Roseau River Restoration Project

Description/Location: The proposed restoration reach lies largely within the DNR Wildlife Management Area in Roseau County, MN. This reach of the river was channelized by the construction of State Ditch 51 which reduced the length of the river, increased its slope, and caused the river to be disconnected from its floodplain. Historic oxbows remain intact, harbor diverse fish communities, and provide habitat for spawning and foraging when accessible during periods of high water. The restoration project will rehabilitate and reconnect the historic river channel and reestablish the natural channel profile and floodplain allowing a sustainable channel to meander as well as reconnect critical fish habitat to the main channel.



PROJECT GOALS:

Channel Restoration

- Reconnect historic river channel
- Reestablish natural channel and floodplain

Enhance Wildlife Habit

- Reconnect oxbows to provide crucial spawning and foraging habitat for fish
- Increase the amount of large river habitat within the watershed
- Restore riparian habitat

Erosion Reduction

- Improve bank stability
- Reduce sedimentation within the channel

PROJECT STATUS

Planning:

- Survey completed fall of 2020
- EAW submitted December 2022
- Final design and permit application development - 2023

Permitting: Permits that may be required

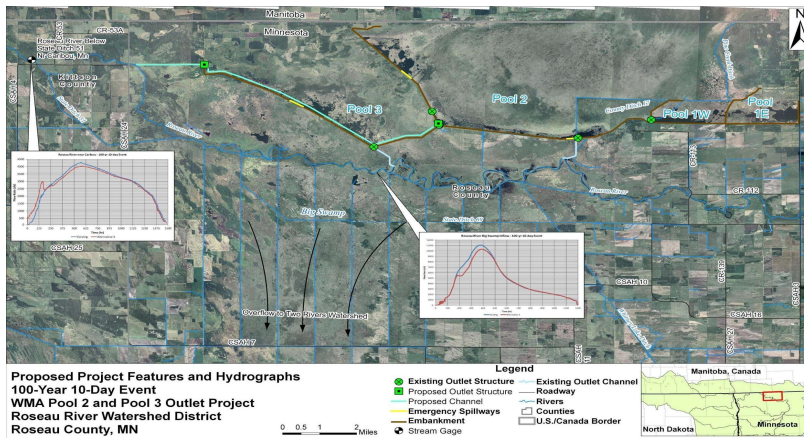
- DNR Permit
- USACE
- WCA
- EAW
- 103E Minnesota Drainage

Funding:

- LSOHC Outdoor Heritage Fund award for \$3,036,000.00
- Other funding partners include: RRWD, MN DNR, RRWMB, US FWS



Roseau River Wildlife Management Area Pool 3 Outlet Project



Description/Location: The Roseau River Wildlife Management (RRWMA) is located in northwestern Minnesota along the Canadian Border. This wildlife impoundment was constructed in 1952 and 1953. The stated purpose of the project was wildlife enhancement and flood control. The RRWMA project was modified in the late 1980's to extend its life and to increase its flood control benefits.

This impoundment has provided many years of flood control benefits to the area, but over the years of operations it has become evident that having the ability to transfer waters between the pools to aid in flood control is beneficial. Experience has also been shown that being able to discharge large volumes of water, from the impoundment, before the Roseau River flood reaches this area, would increase the flood damage reduction effectiveness of the available water storage, thereby lessening damages downstream on the Roseau River and the Two Rivers.

Project Benefits

Flood Damage Reduction (FDR)

- Replaced the failing control structure between Pools 2 & 3.
- Improve water level management for vegetation management.
- Control pool bounce to improve nesting success.
- Provide more efficient flood storage and improve the timing of 8,000 A-F of flood storage in the RRWMA
- Provide FDR downstream at Caribou.
- Manage storage and flow release in beneficial consideration of Red River peak flows.
- Provide FDR in agricultural areas upstream and south of the Big Swamp along the Roseau River in Moose, Soler, Dieter and Pohlitz Township.

Habitat Restoration

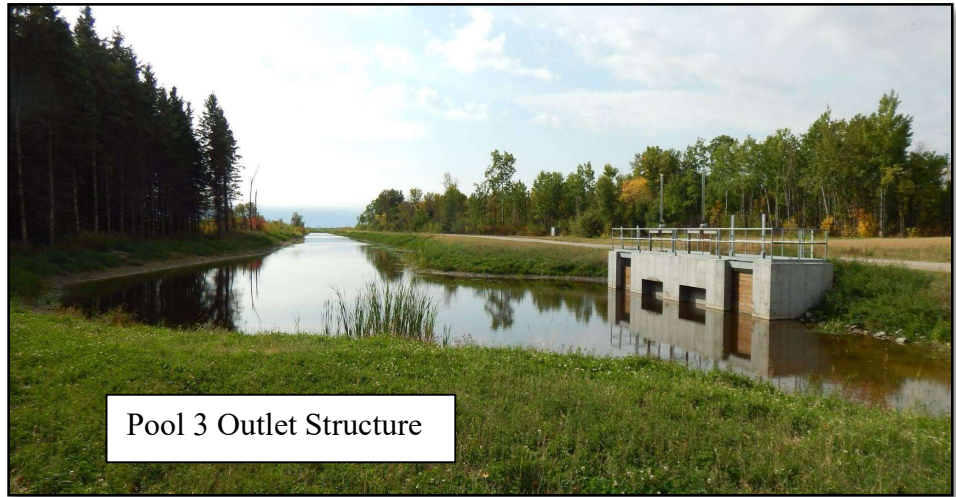
- Streamflow augmentation, improved dissolved oxygen levels, enhanced fish habitat, improved water management capability

Erosion Reduction

- Reduction in riverbank erosion and bank sloughing on the Roseau River.

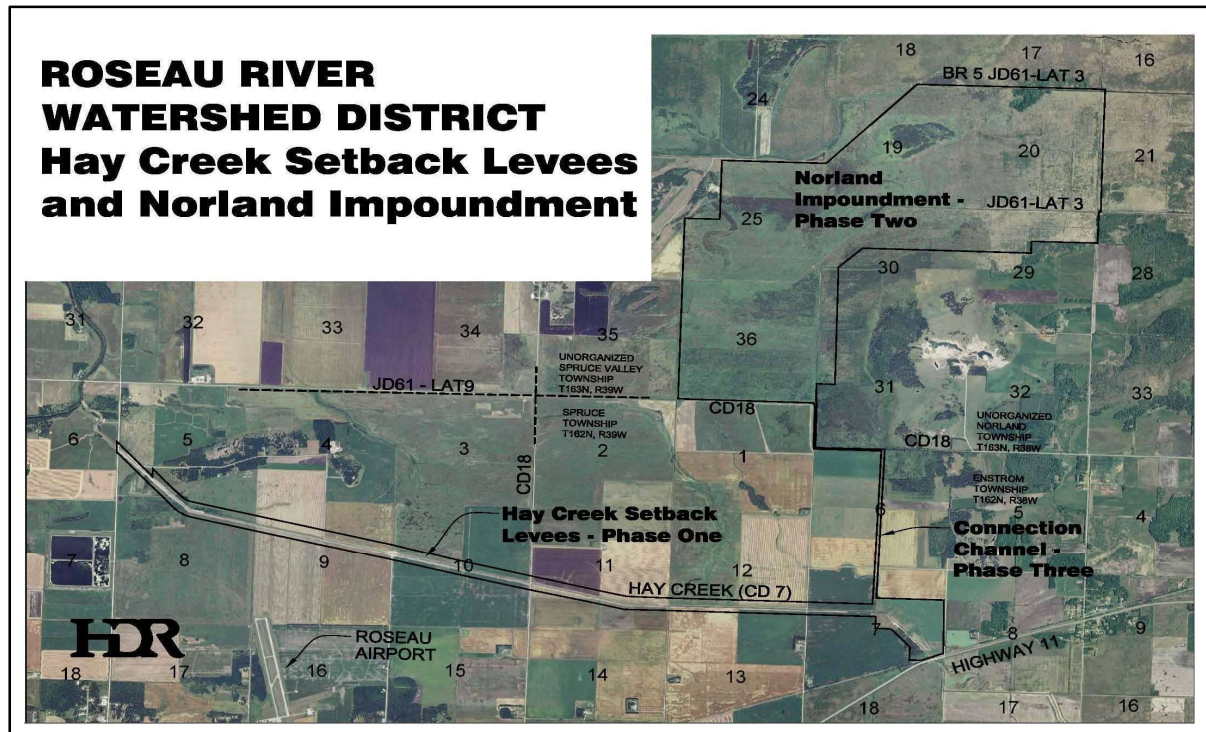
Partners: Red River Watershed Management Board, Minnesota Department of Natural Resources and State of Minnesota Flood Damage Reduction Program.

Status: The final construction was completed in 2018. Initial operation was triggered during flood conditions in the fall of 2019. Maintenance activity and operations according to the Operating Plan were conducted in 2023.



Pool 3 Outlet Structure

Hay Creek-Norland



Description/Location: The project area includes the lower portion of the Hay Creek watershed and adjacent 37 square mile Norland sub-basin. Hay Creek drains into the Roseau River immediately downstream from the City of Roseau. The project includes three features: 7-mile corridor restoration and floodway enclosed by setback levees, an off-channel impoundment site, and a connection channel. This site provides a total of at least 9,500 acre-feet of gated and un-gated runoff storage.

Project Benefits

Flood Control

- 50% reduction in the 10-yr & a 30% reduction in the 100-yr discharges from Hay Creek/Norland drainage area.
- Reducing backwater and flood durations in the City of Roseau.
- Reduce flooding to 13,300 acres of ag land, 24 miles of roads, 131 miles of ditches, and 27 culverts and bridges.

Habitat Restoration

- Streamflow augmentation improved dissolved oxygen levels, enhanced fish habitat, riparian buffer corridor and wetland restorations.

Erosion Reduction

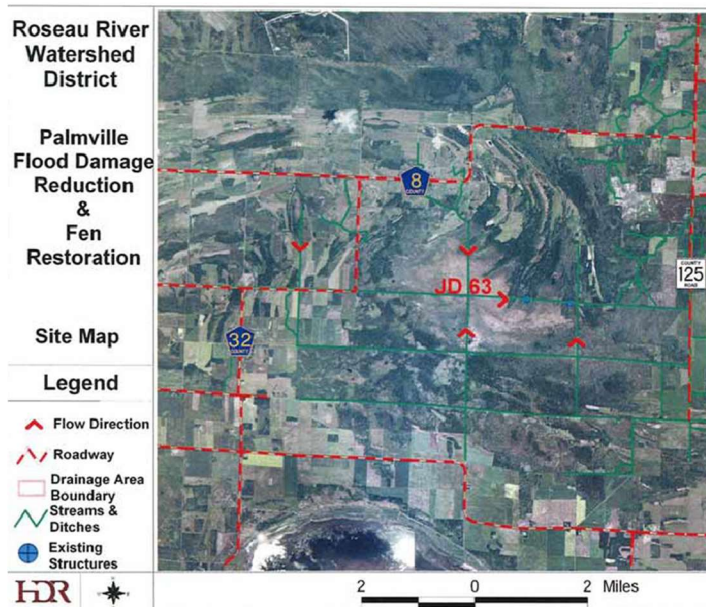
- Reduction in bank erosion on downstream ditches and the Roseau River

Partners: Red River Watershed Management Board and State of Minnesota Flood Damage Reduction Program

Status: The project continues to be operational. Haying and mowing activities are part of the ongoing maintenance.



Palmville Flood Damage Reduction and Fen Restoration Project



Description/Location: The Palmville Fen is a major wetland area covering approximately 3,000 acres located in the upper watershed of the South Fork of the Roseau River, primarily on land owned and managed by the State of Minnesota Department of Natural Resources. The Fen has been degraded by the construction of judicial and county ditch systems over the last one hundred years. The Palmville project is a flood damage reduction (FDR) and natural resource enhancement (NRE) project. Flood control benefits will be provided to immediate areas downstream, the village of Wannaska and the city of Roseau. Fen restoration will hopefully be accomplished by encouraging a greater depth and duration of surface and subsurface flow to spill from the main channel and seep into the adjacent fen.

Project Benefits

Flood Damage Reduction (FDR)

- Reduce frequency of high-water events to agricultural lands downstream
- Provide FDR downstream at Wannaska and Roseau.

Habitat Restoration

- Restore fen to a more natural hydrologic condition.
- Streamflow augmentation, improved dissolved oxygen levels, enhanced fish habitat, improved water management capability

Erosion Reduction

- Reduction in riverbank erosion and bank sloughing on the Roseau River.

Partners: Red River Watershed Management Board, Minnesota Department of Natural Resources and State of Minnesota Flood Damage Reduction Program

Status: The project is operational and functioning as designed. In 2023 mowing and regular structure maintenance took place.



Oakcrest Coulee

The RRWD has partnered with the City of Roseau, Roseau SWCD, and the Oak Crest Golf Course to address phosphorus and sediment issues in a coulee that drains some agricultural and urban land within the City of Roseau. The project goals are to reduce sediment (14 tons/year) and phosphorus (100 lbs./year) discharge into the Roseau River, replace the existing fixed weir with a gated weir to manage water levels for maintenance and fall drawdown, and to meet the requirements for the stormwater permit for the City of Roseau's expansion project(s). Phase I of the project will address stormwater runoff, and Phase II will address sediment and phosphorus removal. Construction is slated for 2024.

Funding Partners:

City of Roseau
Oak Crest Golf Course
Roseau SWCD
BWSR Clean Water Fund
RRWMB
RRWD





Roseau River Arch Rapids

One of the Red River Basin's earliest rock arch rapids is located within the City of Roseau. The Roseau River Rock Arch Rapids is an enhancement of rock rapids located at the site of a former low-head dam north of Highway 11. The original enhancement project of 2001 has since failed and no longer functions as designed.

A Joint Powers Agreement between the RRWD and the MNDNR will allow the rock arch rapids to be redesigned in order to restore fish passage thus improving native species populations and to restore connectivity along the Roseau River. Project partners have been systematically improving public recreation within the river corridor and the rock arch rapids will provide opportunities for fishing and paddling.

In late 2022, the Roseau River Arch Rapids project was awarded a Conservation Partners Legacy Grant through the division of MNDNR Fish and Wildlife. The project was finished early fall of 2023.



Lost River State Forest Peatland Restoration - Phase I

Phase I of the Lost River State Forest Peatland Restoration will reconnect the upper 12.5 square miles of sloped peatlands along the Lost River, and lower reach consisting of 4.6 square miles of sloped peatland. Current hydrology is diverted via JD 61 and the Norland Forest Road. The project aims to restore hydrology throughout the peatland complex where drainage impacts have occurred.

Phase I of this project incorporates a water control structure to be added concurrently with the Norland Forest Road improvement. The control structure will be in-line with the centerline flow path of the Lost River. The site was identified as a priority due to its critical location along the main flow path within the peatland and planned road improvements.

The Lost River State Forest Peatland Restoration - Phase I was awarded a Conservation Partners Legacy Grant through the division of MNDNR Fish and Wildlife. Construction was completed in 2023 with final inspection and payment to be completed in 2024.



FINANCIAL

Budget

The budget adopted at the September 2023 meeting for 2024 locally funded expenditure is as follows:

Following discussion, a **motion** was made by Manager Voll seconded by Manager Wensloff to approve the proposed 2024 budget. Motion carried unanimously.

2024 Administrative Budget:

Salaries & Benefits	\$	147,000.00
Managers per diem and expenses	\$	14,000.00
Dues & registrations	\$	5,000.00
Engineering	\$	7,600.00
Legal & other professional services	\$	20,000.00
Real estate taxes	\$	9,000.00
Rent & utilities	\$	4,650.00
Insurance	\$	6,000.00
Telephone & internet	\$	2,750.00
Office supplies & miscellaneous	\$	20,000.00
Cap. Outlay & building maintenance	\$	8,000.00
RRWD projects / maintenance	\$	4,000.00
Programs & planning	\$	2,000.00
	\$	<u>250,000.00</u>

After a **motion** by Manager Braaten, seconded by Manager Schmalz, the board adopted the following ditch levies.

Ditch system levies for the year 2024:

Watershed Ditch #3	30%
County Ditch #8	20%
County Ditch #16	0%
Watershed Ditch #115	0%
West Intercept (City of Roseau)	\$2,500 (set amount)
State Ditch #51	1% on redetermined benefits

A one percent assessment on redetermined benefits on State Ditch #51: approximate figures are as follows:

Roseau County	\$88,177.69
Kittson County	\$ 1,155.02
Marshall County	\$ 641.92
Beltrami County	\$ 899.65
Lake of the Woods County	\$ 648.60

After a **motion** by Manager Schmalz, seconded by Manager Braaten, the board adopted the Red River Watershed Management Board (RRWMB) levy and ad valorem tax in the amount of .0003627 percent of the estimated market value of all taxable property within this district and within the counties set forth in Chapter 162, 1976 Session Laws. Half of the proceeds of this levy will be sent to the RRWMB, half remained with the RRWD as Construction Funds.

Financial Summary

This section summarizes the District's financial activity for 2024. The information provided in this section is a summary of the activity for the year. A detailed report of all activity within the respective fund accounts is available for review at the District's office. By law the Roseau River Watershed District is allowed to establish several funds for the purpose of carrying out their duties. To finance these funds the District levies an "ad valorem" tax, meaning in "proportion to the value," over the entire watershed district and is based on the property value, rather than benefits. The following is a brief summary of types of funds established and the ways they assist in carrying out the goals of the District.

General Fund

This is the general operating fund of the District. The fund is set up for the purpose of providing for the general administrative expenses and for the construction and maintenance of projects of common benefit to the District. A general fund, consisting of an ad valorem tax levy, may not exceed 0.096 percent of estimated market value, or \$500,000, whichever is less.

Red River Watershed Management Board Construction Fund

This was established and used for the development of programs and projects of benefit to the District. The levy to fund the Red River Water Management Construction Fund may not exceed 0.0003627 of the taxable market value of the property in the District. One-half of the levied funds received are sent to the Red River Watershed Management Board for programs and projects that have common benefit in the Red River Basin. The second half of the levy is utilized for projects beneficial to the management goals of the District.

Other Income

These are other sources that are received by the District that include funds from grants and aids as well as reimbursement from other governmental agencies.

2024 Financial Audit

The basic financial statements provided by the District's accountant for the year (January 1, through December 31, 2023) as augmented with the Legal Compliance are available upon request and are on the RRWD website.